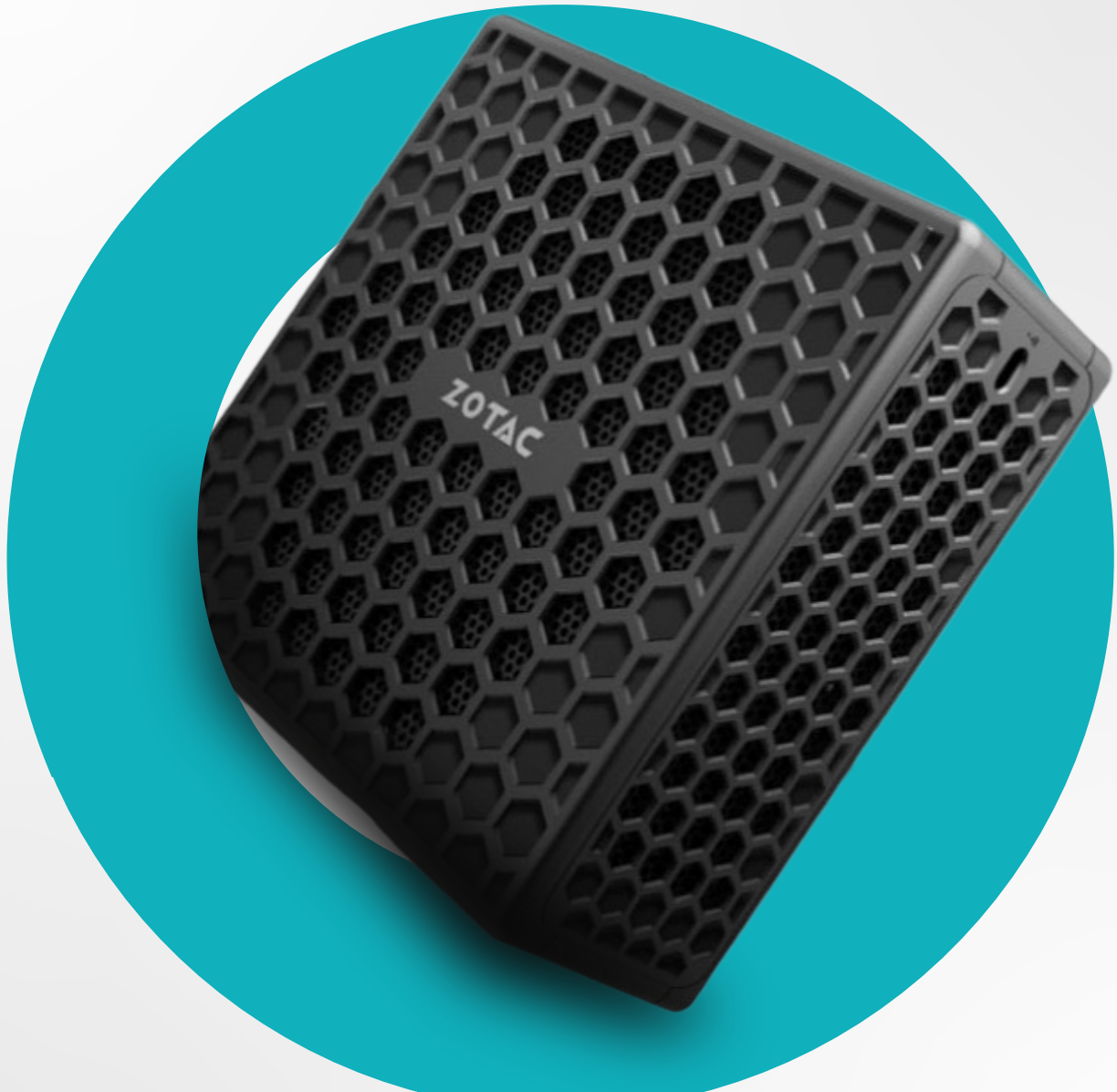




# OCTEK

OCEAN OFFICE AUTOMATION



# C SERIES

## GUIDE



**SERIES**

# ***THE STRONG, SILENT TYPE***

Experience the power of fanless, no moving parts computing with the ZOTAC ZBOX C Series nano Mini PC. Its passive-cooled chassis allows for fanless cooling even in demanding environments. Equipped with a powerful Intel Core processor, this mini PC delivers exceptional performance for various applications, including menu boards, POS systems, productivity tasks, and multimedia activities across multiple displays. With integrated 802.11ac Wi-Fi and dual Gigabit Ethernet, you'll enjoy lightning-fast wired and wireless network connectivity.

## **COMPACT DESIGN**

Nimble versatility and mobility is provided by the designed VESA mounting compatibility built in.

## **EASY UPGRADABILITY**

Loosen 4 screws and remove the cover to get quick and easy access to upgrade storage and memory.

## **NO MOVING PARTS**

A fanless cooling solution, paired with a fast SSD, makes for a powerful and commercially robust system with no moving parts.



# CI331 NANO



The ZBOX CI331 nano is a compact and power-efficient mini PC that delivers a fanless commercial device experience. It is equipped with a next-generation Intel processor, providing reliable and durable performance without the need for a fan. The passive cooled design ensures high reliability and extended durability, while the honeycomb vents and aluminum heatsink efficiently dissipate heat to maintain optimal performance. With its VESA mount compatibility, the ZBOX CI331 nano can be easily placed in various locations. Whether it's for point of sale, digital signage, light productivity, or everyday tasks, this compact PC is the perfect choice.



**DISPLAYPORT**



**HDMI**



**VGA**



**BLUETOOTH 5**



**DUAL LAN**



**WIFI 5**

## Intel Celeron N5100

(quad-core 1.1GHz, up to 2.8GHz)

## Intel UHD Graphics

(Integrated - Dual Display)

## DDR4 SO-DIMM memory

(Up to 16 GB)

## SATA SSD/HDD slot

(2.5-inch 6.0 Gbps)



# CI332 NANO



The ZBOX PRO CI332 nano is a high-performance embedded system designed to enhance productivity in resource-intensive applications. With its quad-core processing power and power efficiency, it is capable of handling demanding tasks and boosting productivity. This versatile system is suitable for a wide range of applications, from powering commercial machinery to driving Ultra HD Digital Signage showcases.

The CI332 offers a variety of connectivity options, including Dual HDMI, DisplayPort, RS-232 serial port, USB 3.1 ports, WiFi 6E, and Gigabit Ethernet, allowing for seamless integration into existing systems. Its fanless and ultra - compact design enables installations in demanding and sensitive locations, where robust operation and space efficiency are essential.

Whether you need a reliable and powerful solution for industrial automation, digital signage, or other resource-intensive applications, the ZBOX PRO CI332 nano provides the performance and connectivity required to meet your project's demands.



## Intel Celeron J6412

(quad-core 2.0GHz up to 2.6GHz, 1.5MB cache)

## Intel UHD Graphics

(Integrated - Triple Display)

## DDR4 SO-DIMM memory

(Up to 32 GB)

## SATA SSD/HDD slot

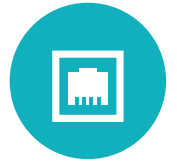
(2.5-inch 6.0 Gbps)



**DISPLAYPORT**



**HDMI**



**GIGABIT LAN**



**WIFI 6E**



**BLUETOOTH 5.2**



Windows 10 IoT



# CI342 NANO



The ZBOX PRO CI342 edge is a powerful and versatile mini PC designed for embedded solutions. With its passive cooling system, it operates silently and reliably without any moving components. The ultra-thin design allows for easy installation in demanding locations where space is limited. The CI342 edge offers a wide range of I/O connectivity options, ensuring seamless integration into various applications. Whether it's edge computing, industrial control, digital signage, or point of sale, this mini PC can handle it all. With support for dual 4K displays, it delivers stunning visual performance. Designed to be fanless and ultra-thin, the ZBOX PRO CI342 edge provides a compact and reliable solution for embedded projects. It offers the power and flexibility needed to meet the demands of various industries and applications.



**DISPLAYPORT**



**HDMI**



**BLUETOOTH 5.2**



**DUAL LAN**



**WIFI 6E**

## Intel Pentium N6415

(quad-core 1.2GHz, up to 3.0GHz, 1.5MB cache)

## Intel UHD Graphics

(Integrated - Dual Display)

## DDR4 SO-DIMM Memory

(Up to 32 GB)

## M.2 SATA SSD Slot





MODEL	CI331	CI332	CI342
CPU	Intel Celeron N5100	Intel Celeron J6412	Intel Pentium N6415
GPU	Intel UHD Graphics (Dual Display)	Intel UHD Graphics (Triple Display)	Intel UHD Graphics (Dual Display)
MEMORY	Up to 16GB DDR4 SO-DIMM	Up to 32GB DDR4 SO-DIMM	Up to 32GB DDR4 SO-DIMM
HDMI	x1	x2	x1
DISPLAYPORT	x1	x1	x1
VGA	x1		
USB 3.1	x2	x3	x2
USB 3.0 TYPE-C	x1	x1	
USB 3.1 TYPE-C		x1	x1
USB 3.0	x1		
USB 2.0	x1		
RS-232		x1	x1
WIFI	WIFI 5	WIFI 6E	WIFI 6E
LAN	Dual Gigabit LAN	Gigabit LAN	Dual Gigabit LAN
BLUETOOTH	5	5.2	5.2
DIMENSIONS	12.8cm x 12.7cm x 5.7cm	16cm x 12.6cm x 5.8cm	14.7cm x 14.7cm x 3.2cm